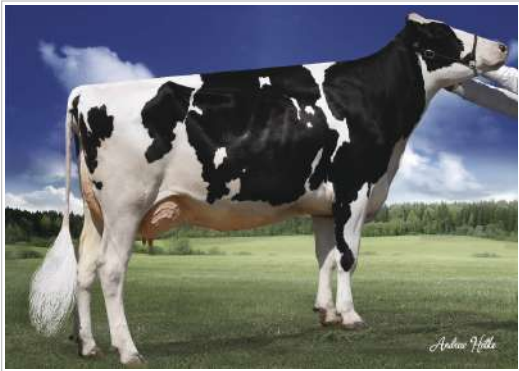
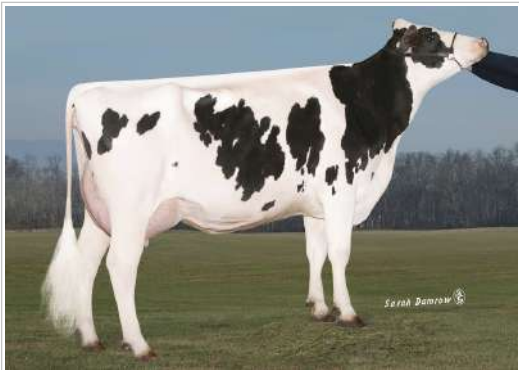




Dam: Melarry Damaris Whilma-ET (VG-87-EX-MS)



Dam: Melarry Damaris Whilma-ET (VG-87-EX-MS)



MGD: Butz-Butler Snow Whitney-ET (VG-85)

14H014193 WHINO



Melarry Frazzled Whino-ET

TR TP TC TV TL TY TD

Frazzled x Damaris x Shan

Born: 1/4/2017

Reg: HO8403141562683

99% RHA-I aAa:435 DMS:345,135

Melarry Farms, Rice, MN

Beta-casein: A2A2 Kappa-casein: AA

Sire: Melarry Josuper Frazzled-ET

Dam: Melarry Damaris Whilma-ET (VG-87-EX-MS)

2-03 2X 365d 33,200M 3.7% 1,233F 3.2% 1,077P

MGS: S-S-I Sterling Damaris-ET

MGD: Melarry Shan Whinn-ET (VG-85)

2-05 2X 365d 30,120M 4.0% 1,219F 3.5% 1,052P

MGGS: Ladys-Manor Man-O-Shan-ET (EX-90)

MGGD: Butz-Butler Snow Whitney-ET (VG-85)

2-02 3X 365d 34,610M 4.5% 1,560F 3.2% 1,110P

Production & Health Traits - CDCB GENOMIC EVALUATION (12/18)

Trait	Value	Rank	Other Trait	Value
Milk	+1,508	77%R	O D O H US	
Fat	+70	+0.05%		
Protein	+54	+0.03%	EFI 8.1%	GFI 9.2%
Productive Life	+8.7	72%R	Net Merit \$	+\$904
Cow Livability	+5.3	66%R	Fluid Merit \$	+\$860
SCS	2.56	74%R	Cheese Merit \$	+\$928
Mastitis	+2.4	61%R	Grazing Merit \$	+\$851
HCR	+3.8	67%R	CCR	+3.8
DPR	+2.7	71%R	SCR	+1.7

Calving Traits - CDCB GENOMIC EVALUATION (12/18)

Trait	Value	Rank	Value	Rank
Sire Calving Ease	7.1%	62%R	0	
Daughter Calving Ease	4.2%	57%R	0	
Sire Stillbirth	6.6%	59%R	0	
Daughter Stillbirth	3.7%	55%R	0	
Gestation Length	-0.2	70%R	0	

WELLNESS TRAITS - (12/18)

Trait	Value	Rank	Trait	Value	Rank
DWPS	+\$1,258		WT\$	+\$297	
Mastitis	112	52%	Ret. Placenta	106	51%
Lameness	106	52%	Ketosis	113	51%
Disp. Abomasum	107	51%	Metritis	110	51%
CW\$	+\$48		Calf Scours	108	46%
Calf Resp. Disease	103	40%	Calf Livability	108	44%

Type Traits - CDCB/HA GENOMIC (12/18)

PTAT +1.25 76%R UDC +1.62 FLC +1.52 Dtrs 0 Herds

